

V-neck kimono sleeve top

Another version of kimono sleeve tops and tees. This is a comfortable blouse which will go well with your shorts or cropped jeans. The pattern is simple and similar to the Short kimono sleeve top, just a few different lines to draw when you draft your own one.



Note: This pattern is suitable for fine and soft fabric

Materials:

Cloth (any type and color you like)

Scissors

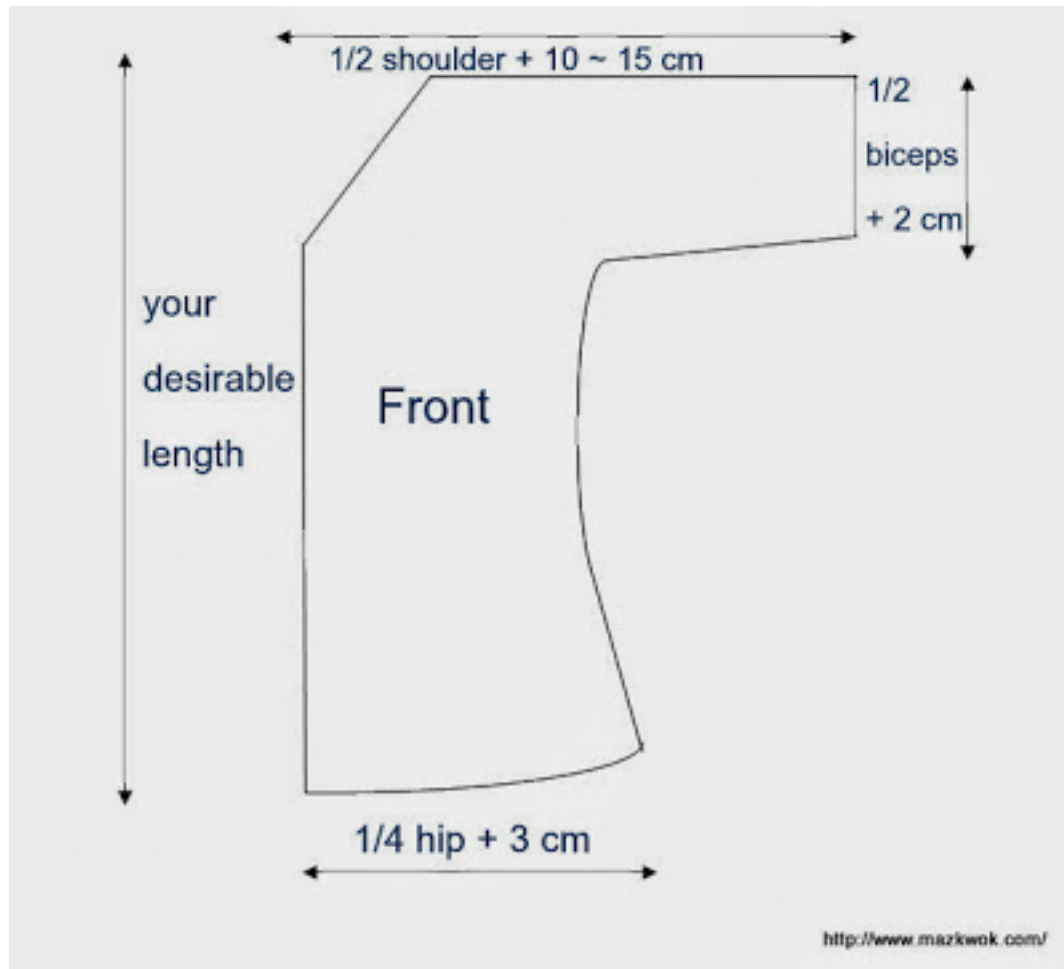
Sewing needle

Sewing thread

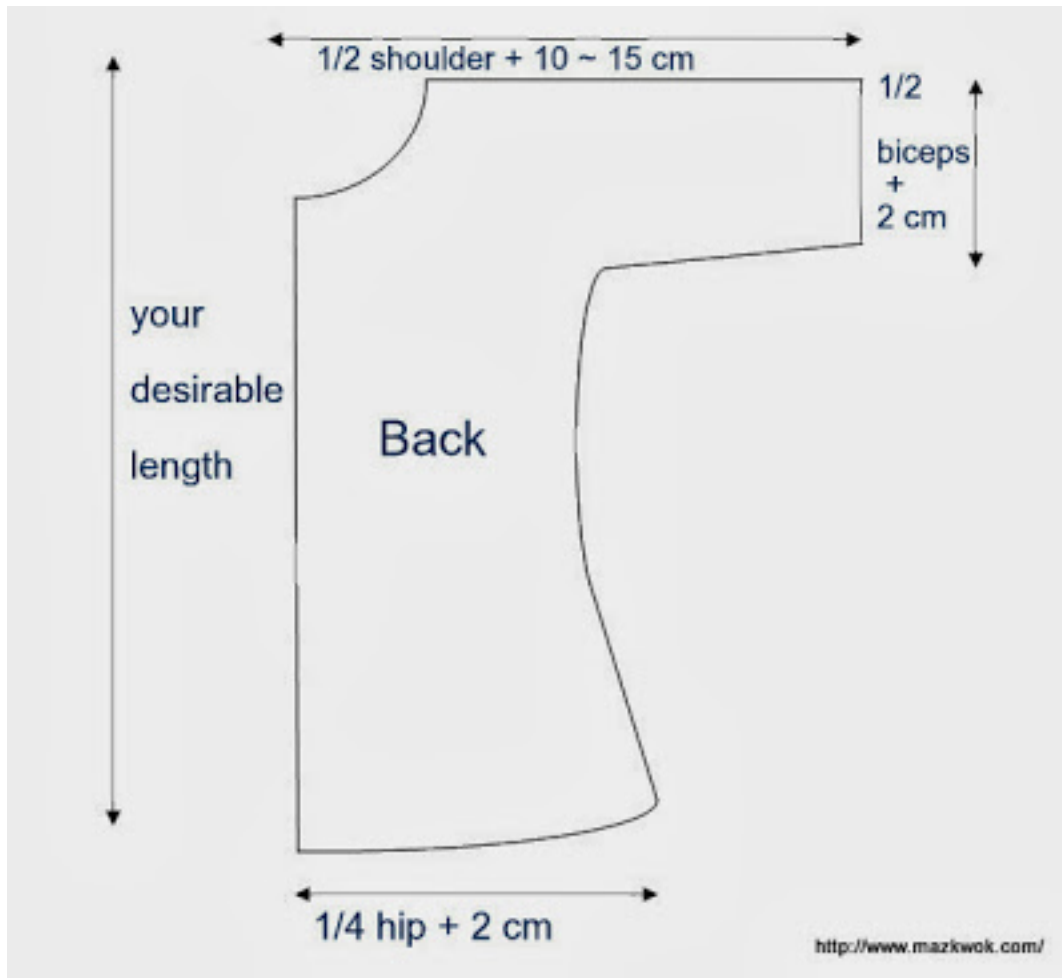
Sewing machine

Measuring tape & ruler

Tailor's chalk



Take your own measurement for the V-neck line.



For a longer blouse, you'll have to increase the hip measurement.

Sewing order: sew shoulder lines and body lines together then hem lines

I added a little lace to the V-neck line with bias binding technique. You can check it out here: <http://www.favecraftsblog.com/sewing-technique-single-fold-bias-binding/>